

# CAMSO WHL 775R

FORMERLY SOLIDEAL SRLD



WHEEL LOADERS



## MULTI-SURFACE DURABILITY AT ITS BEST

Combines multi-surface versatility and long-lasting durability. With excellent stability and resistance to cracking, it's the ideal radial L5 tire solution for extreme mixed- and hard-surface wheel loader applications.

[camso.co](http://camso.co)

## PERFORMANCE

TIRE LIFE



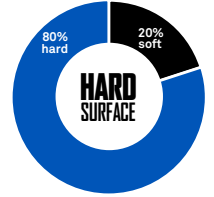
PUNCTURE RESISTANCE



TRACTION



# CAMSO WHL 775R



## EXTRA-DEEP LUG TREAD

- Enhances durability and resistance to flat tires for extreme mixed and hard surface applications

## CONTOURED LUG BASE

- Promotes stone ejection and resistance to cracking



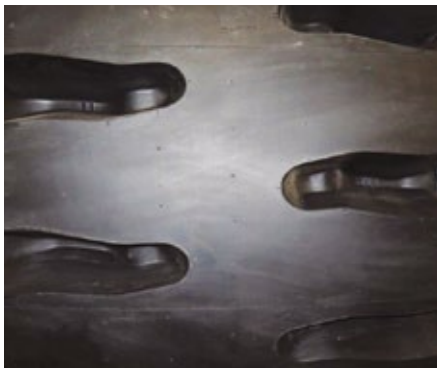
## HEAVY-DUTY SIDEWALL CONSTRUCTION

- Protects against side impacts and deformation under heavy load

## ROBUST DUAL-STAR CARCASS

- Provides excellent stability and enhanced loading capacity

TIRE SIZE	TYPE	RIM SIZE	TIRE DIMENSIONS			APPLICATION	SI	INFLATION PRESSURE [KPa] [PSI] AND LOAD CAPACITY [kg] [lb]										
			O.D. [mm] [in]	O.W. [mm] [in]	O.T.D. [mm] [32nd]			KPa	200	250	300	350	400	450	500	550	600	650
			PSI	29	36			44	51	58	65	73	80	87	94			
20.5R25	TBLS	17.00/2.0	1544	517	74	Loader*/**	A2	kg	4750	5600	6300	7100	8000	8750	9500	10000	10900	11500
			60.79	20.35	93.2			lb	10500	12300	13900	15700	17600	19300	20900	22000	24000	25400
23.5R25	TBLS	19.50/2.5	1673	605	80	Loader*/**	A2	kg	6000	7100	8250	9250	10300	11200	12150	12850	13600	14500
			65.87	23.82	100.8			lb	13200	15700	18200	20400	22700	24700	26800	28300	30000	32000
26.5R25	TBLS	22.00/3.0	1791	700	86	Loader*/**	A2	kg	7500	9000	10300	11500	12850	14000	15000	16000	17000	18500
			70.51	27.56	108.3			lb	16500	19800	22700	25400	28300	30900	33100	35300	37500	40800
29.5R25	TBLS	25.00/3.4	1915	790	92	Loader*/**	A2	kg	-	-	-	-	15500	17000	18000	19500	20600	22400
			75.39	31.10	115.9			lb	-	-	-	-	34200	37500	39700	43000	45400	49400



## Camso WHL 775R tread lugs are designed with:

- Step in lugs to protect the carcass from punctures
- Rounded angles to avoid tread tears and better support stress
- Tread Wear Indicator (TWI) to monitor mh/mm performance

AUTHORIZED DISTRIBUTOR:

[camso.co](http://camso.co)



FORMERLY CAMOPLAST SOLIDEAL